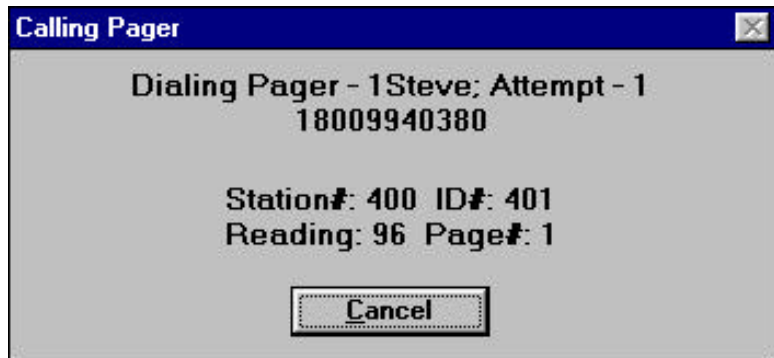


PAGER

PAGER is an optional module that can be added into Automata's FIELD COMMANDER and FIELD VISION software. It is used to page a person in the event of a high or low alarm, using the person's numeric pager. It can be setup to page on Analog (e.g.

temperature), Digital (e.g. contact switch), or calculated (e.g. wet bulb temperature) alarms. Twenty-five

different pager numbers can be used and each alarm can be paged 99 times. In addition, up to a 90 minute delay between pages can be entered to allow an alarm to be acknowledged by someone before paging the next person in the list.



The first page of a reported alarm at Station 400, ID 401 being sent to Steve with a reading of 96.

System Requirements

200 MHz computer running Windows 95/98/NT, 64 Megabytes of RAM, PS/2 or Bus Mouse 40 Megabytes of Hard drive space and Automata's data acquisition software (FIELD COMMANDER or FIELD VISION) and hardware.

10/01