

Optional Software For Field Vision and Field Commander

Automata's optional software programs are valuable management tools. Information gathered automatically from one or several Field Stations/Controllers can be used in several different ways. Real-time data shows the current conditions at your monitoring sites, while database functions allow you to review the history of your sensor readings. Access to all this information can help you better manage your operation. And with automatic data collection, you won't even have to work hard!

System Requirements: 200 MHz computer running Windows 95/98/NT, 64 Megabytes of RAM, PS/2 or Bus Mouse 40 Megabytes of Hard drive space and Automata's data acquisition software (FIELD COMMANDER or FIELD VISION) and hardware.

EXTENDED CONTROLS

EXTENDED CONTROLS is a situational, modular addition for use in Automata's FIELD COMMANDER and FIELD VISION software. There are user-selectable parameters for closed loop operation. It uses an "if this, then that" logic of operation.

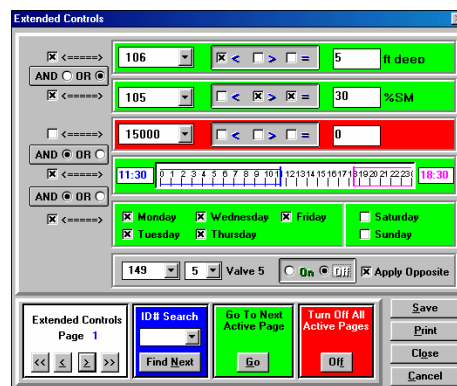
Features:

- Single Control of Valve, Pump, other Switched Control.
- Up to 3 different Analog or Digital Inputs, 1 or 2 Time ranges (Within that day), and Day of Week selection for logic control.
- *Apply Opposite* option, which allows control to be returned to opposite state (ON/OFF).
- 100 Programmable Pages.
- AND/OR Logic used in ranges for sensor value(s), time(s), and day(s).

COLD SPOT

Don't get caught by unpredictable weather and microclimate variation. FIELD VISION with COLD SPOT software continuously watches your fields 24 hours a day, alarming you when the weather threatens your crops.

- Calculates wet bulb temperature and dew point for better Frost Protection.
- Alarms with user-definable set points.
- Controls wind machines, pumps, and valves (when used in combination with EXTENDED CONTROLS).
- Optional: For better frost management protection, combine the COLD SPOT and PAGER Modules.

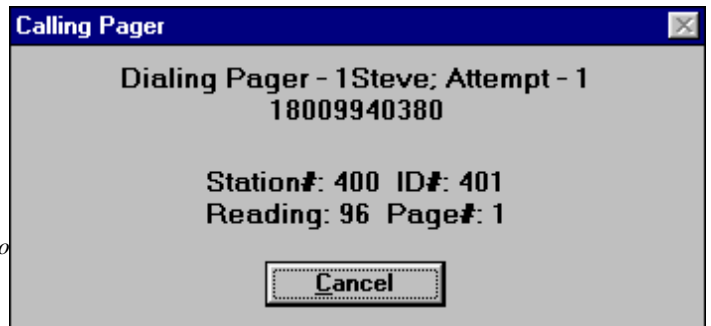


Valve 5 (Control ID 149:5) setup to turn OFF when Level (ID 106) is less than 5 ft deep or Soil Moisture % (ID 105) is greater than 30%, and it is either before 11:30 am or after 6:30 pm, and it's Monday thru Friday, otherwise valve 5 will be turned on (due to Apply Opposite option).

PAGER

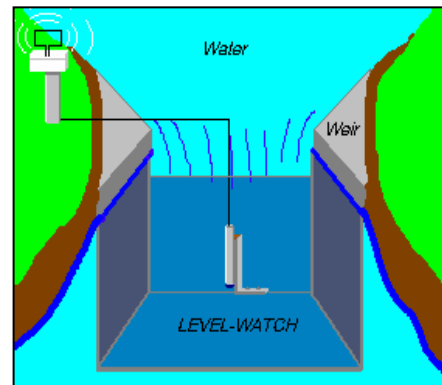
PAGER is used to notify a person in the event of a high or low alarm, using the person's numeric pager. It can be setup to page on Analog (e.g. temperature), Digital (e.g. contact switch), or calculated (e.g. wet bulb temperature) alarms. Twenty-five different pager numbers can be used and each alarm can be paged 99 times. In addition, up to a 90 minute delay between pages can be entered to allow an alarm to be acknowledged by someone before paging the next person in the list.

The first page of a reported alarm at Station 400, ID 401 being sent to Steve with a reading of 96.



FLOW ABACUS

The FLOW ABACUS module enables a user to calculate flow rate and total flow in a Flume, Weir, or Pipe without a flow meter or flow totalizer. It uses a user-defined table to find the flow rate based on level, velocity, or both. Combined with Automata's Real-Time Remote MINI-Monitoring System, the module gives the user another choice for flow monitoring.



EVAPORTRANSPIRATION (ET)

ET computes Evapotranspiration, which can be used to help schedule irrigation. (Requires: solar radiation, air temperature, humidity, and wind speed sensors).

DIAL UP

DIAL UP software allows the user to call Field Stations, via a modem, for real-time control and monitoring. Requires a phone modem. Can be used in combination with the POLLER Module.

CROP WATER STRESS INDEX (CWSI)

CWSI Utilizes plant canopy temperature measurement; along with solar radiation, air temperature, and humidity readings; to indicate when a plant is "stressed" often before the plant shows observable signs of stress, thus providing another tool for making optimum irrigation, fertigation, and plant disease management decisions.

POLLER

POLLER software allows automatic interrogation of Field Stations for real-time monitoring. When combined with the DIAL UP Module it is ideally suited for systems with phone modem telemetry. Can also be used with other Automata Telemetry Systems.