



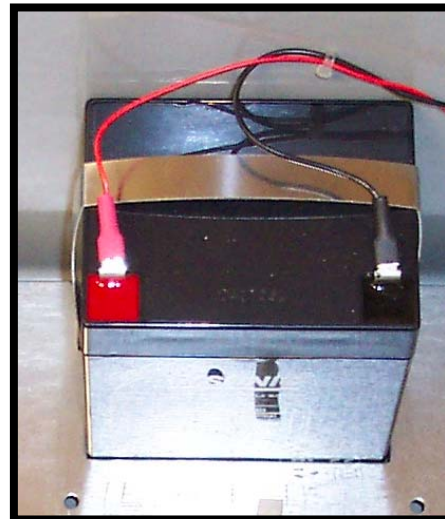
12 V BATTERY

5 and 12 amp HR

520-5012-XXX

Description

Automata offers two battery options for MINI Field Stations. The 12V, 5 Amp hr. (#520-5012-005) is the standard battery offered in the standard post and optional NEMA 4 Chassis. The 12V 12 Amp hr. (#520-5012-012) is offered in the specially designed 'U' Post Chassis and NEMA 4 with special base plate at an additional cost. Both Batteries are non-spillable, rechargeable SLA Batteries.



#

520-5012-005
(Battery cable and bracket not included)

Specifications	5 Amp	12 Amp
Nominal Voltage	12V	
Ampere Hour Capacity (20hr Rate to 1.75VPC)	5 Ah	12Ah
Recommended Charging		
Float Use Voltage	2.28V/Cell	
Float Use Current	<0.75A	<2A
Cycle Use Voltage	2.45V/Cell	
Cycle Use Current	<1.5A	<3.5A
Temperature Range		
Charge	32°F to 104°F	
Discharge	5° to 122°F	
Storage	5° to 104°F	
Dimensions	Inches	
Length	3.54"	5.94"
Width	2.76"	3.90"
Height	3.98"	3.75"
Weight	4.03 lbs	9.26 lbs

Email: sales@automata-inc.com • <http://www.automata-inc.com>
 Fax: 530-478-5881 • Phone: 530-478-5882 • 800-994-0380
 138 New Mohawk Rd, Ste. 151 • Nevada City, California 95959